

## Trailflex Flexible Permeable Paving

Pedestrian & Light Traffic | Cell Sub-Base



Trailflex is a low cost, environmentally friendly and completely SuDS compliant flexible permeable paving which is flexible up to 90°.



**1 – Trailflex Flexible Permeable Paving 35 -50mm (resin bound recycled tyre and stone)**

An innovative surface comprised of resin bound recycled tyres and aggregate. Used as a fully permeable and eco friendly alternative to macadam or concrete surfacing. Resistant to both clogging and freeze thaw Trailflex can be laid extremely quickly, without falls and can be trafficked in under 24 hours. Dependant on depth trailflex can take traffic of up to 18 tonnes.

**2 – Cell System**

45mm depth fully connected cellular reinforcement structure infilled with well compacted 4/10mm graded crushed aggregate to BS EN12620.

**3 – Geo-Textile Membrane**

A geo-textile membrane to prevent upward migration of fine soil particles.

**4 – Sub-Grade**

### Description

Originally developed for areas containing trees under protection order, Trailflex is a low cost and completely SuDS compliant water management solution. It uses recycled car tyre and stone bound with our specially developed resin to create one of the greenest paving solutions on the market today.

Trailflex allows for up to 90 degree flexibility without compromising weight loading or strength, in fact can take an additional weight loading of up to 18 tonnes.

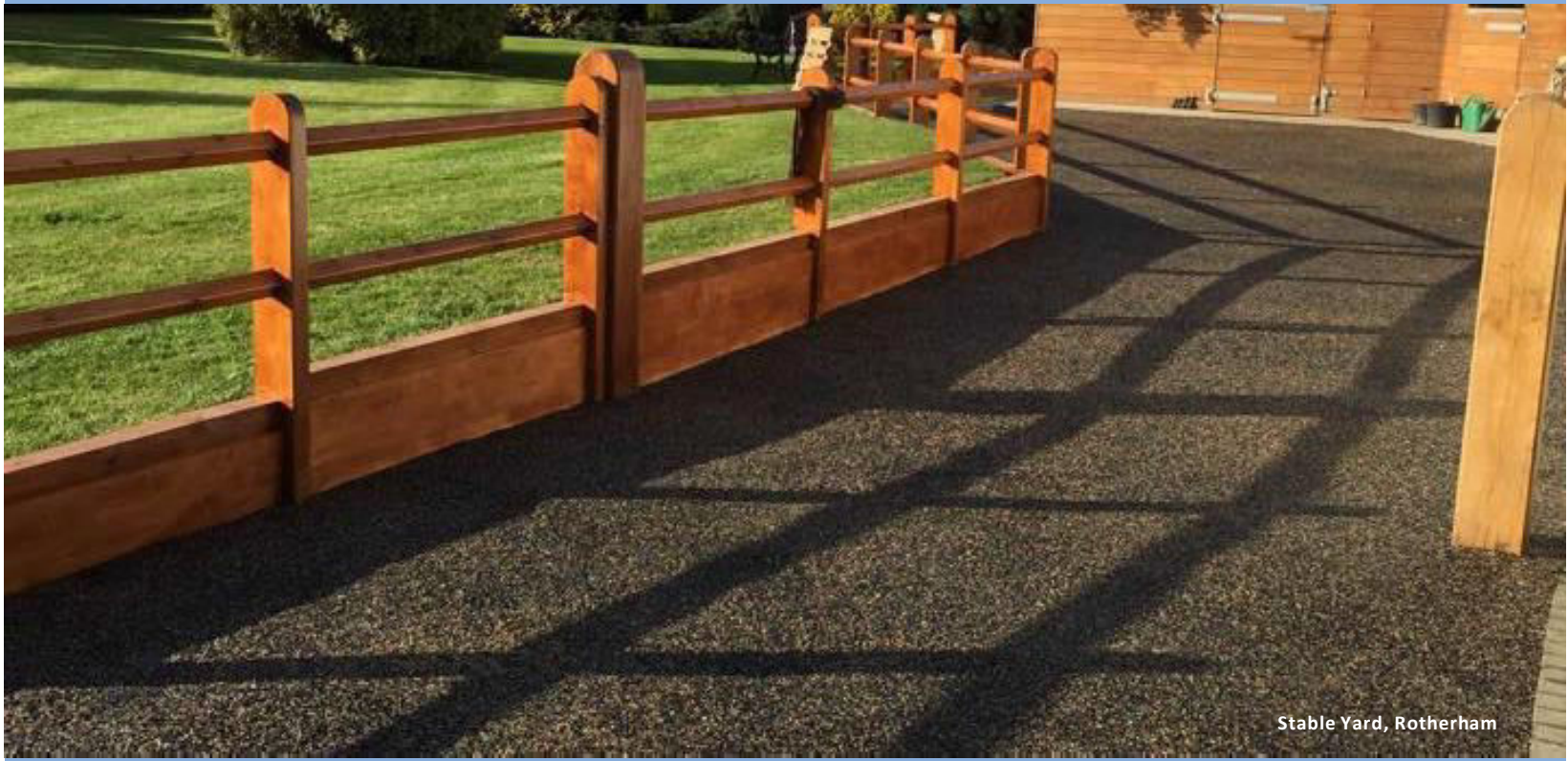
The finished surface adaptable in physical form therefore removing any risk of root intrusion and subsequent cracking.

### Advantages

- One part cold poured system flexible to 90° - impervious to tree root intrusion and cracking
- Fully SuDS compliant, BREEAM accredited and freeze thaw safe
- Remains porous finds /grit agitate through the surface
- Unrivalled porosity - over 50,000 litres per m<sup>2</sup> per hour. With a ten year porosity guarantee
- Totally porous, extremely durable, low maintenance
- 18 tonne straight line loading

# LANGFORD

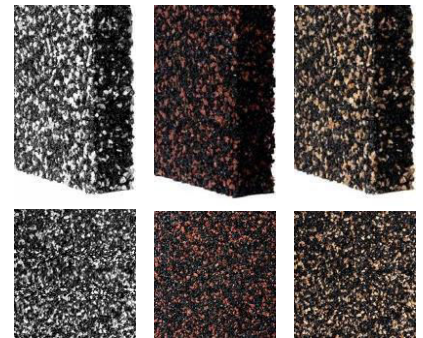
- DIRECT -



Stable Yard, Rotherham

## Specification Advice for Trailflex Permeable Paving

Typical groundwork specifications	Footpaths & Light Vehicle Traffic- 45mm depth fully connected cellular reinforcement structure
Speed of cure	16hours
Typical construction	35-50mm – Trailflex Permeable Paving 45mm – Cell System Geo Textile Membrane



## Maintenance

Trailflex allows small finds/grit to agitate through the surface as the area is used. This produces a hostile environment for weeds and seedlings and ensures continual porosity. Trailflex allows expansion and contraction and is unaffected by low temperatures such as frost and ice which may otherwise cause damage during the freeze/thaw process.

## Environmental impact

For every square metre laid Trailflex recycles up to 3 tyres reducing waste. In some commercial situations the tyres saved during the installation of your Trailflex surface can be offset against your company's carbon footprint. For more information contact a member of the Trailflex team.

*This specification is based on normal good practice for flexible surfacing and does not absolve the specifier on designing a construction suitable for the expected traffic and ground conditions pertaining to a given site.*

Telephone 0330 900 2288 | Email [info@langforddirect.co.uk](mailto:info@langforddirect.co.uk) |

Website [www.langforddirect.co.uk](http://www.langforddirect.co.uk)

Address Piccadilly House, 49 Piccadilly Gardens, Manchester, M1 2AP

